

Africa's leading supplier of open pollinated and hybrid seeds...



...providing local solutions to a global market



# Seed Catalogue



**royalseed**  
QUALITY SEEDS FOR AFRICA

TOLL FREE NO.  
**0800720250**

These calls are free of charge.

**royalseed** FOR CONSISTENT SUPPLY OF QUALITY SEED  
RED ONION SWEET PEPPER ASALI FL

Home | Facebook | Twitter | LinkedIn | YouTube | Instagram | WhatsApp | Email | Phone | Website

020 201 4967 | 0734 237435 | [www.royalseed.biz](http://www.royalseed.biz)

*E-Mail: [info@khs.co.ke](mailto:info@khs.co.ke)  
[www.royalseed.biz](http://www.royalseed.biz)*

Africa's leading supplier of open pollinated and hybrid seeds...



...providing local solutions to a global market



*Dear Customer,*

*Welcome to our latest Seed Catalogue.*

*Kenya Highland Seed (KHS) was established in 1998 and has been supplying Open Pollinated and Hybrid seeds since 2000. We have an extensive portfolio of established hybrids under our brand 'Royal Seed', including Tomatoes, Cabbages, Onions, Peppers, Carrots and Kale (sukuma wiki), and sell a wide range of large and small vegetable seeds with particular focus on high yielding hybrids.*

*Our catalogue gives full details of all our product range, broken down into two sections—**Domestic** and **Export** and at the end you will find a useful "Shopping List" to complete and fax back to us.*

*From time to time we also offer **discounts** and **special offers**, details of which you can find on our website home page, along with details of new products as they are available, so be sure to visit the site so you don't miss out!*

*We hope you enjoy looking through our catalogue and we look forward to doing business with you in the future.*

TEL:+254 20 2690693.3562700,+254 725 549997,+254 734 257635,TOLL FREE No.0800720250

EMAIL:info@khs.co.ke | WEBSITE:www.royalseed.biz | M-PESA PAYBILL NO.320350 | FREE SMS Service:22171

ROYAL SEED UGANDA:+256 750 584620 | ROYAL SEED TANZANIA:+255 758 468446,+255 746 260144

# Domestic Product Range



## Tomatoes

**OXLY:** *An improved Rio-Grande type with oval fruits suitable for all markets.*



### Characteristics:

- Determinate
- Maturity 75 days from transplanting
- Fruit weight 90 - 100 grams
- Yield potential 12-16 tonnes per acre
- Very good shelf life and transportability
- Very fast germinating with vigorous plants

### Resistances / Tolerances:

- Good tolerance against Leaf Roll Virus

### Pack Sizes:

- 10 grams: Foil Packet
- 25 grams: Foil Packet
- 50 grams: Tin
- 100 grams: Tin
- 250 grams: Tin
- 500 grams: Tin

**FAULU:** *One of the best OP varieties for dual purposes*



### Characteristics:

- Determinate
- Maturity 60 - 70 days from transplanting
- Fruit weight 85 - 95 grams
- Yield potential 12 - 16 tones per acre
- Oval shaped uniformed fruits, excellent setting and very firm fruits with good shelf life
- Fruits are very uniform size and set very well under high temperatures

### Resistances / Tolerances:

- Fusarium Wilt
- Verticillium Wilt

### Pack Sizes:

- 10 grams: Foil Packet
- 25 grams: Foil Packet
- 50 grams: Tin
- 100 grams: Tin
- 250 grams: Tin
- 500 grams: Tin



*As you can see from the photo on the left, all our products are sold in our own branded, high quality packaging.*

*Depending on the product you choose you will either receive them sold by weight in grams or by individual seed count.*

*Again depending on product they will be packed in either Foil Packets, Tins or for large quantities in plastic bags.*

*No expense is spared to ensure that you receive the highest quality product at the most affordable prices.*



**RAMBO F1:** *An excellent determinate tomato with perfect oval shape - wilt tolerant variety*



**Characteristics:**

- Determinate
- Maturity 75 days from transplanting
- Fruit weight 150 grams
- Yield potential 30 tonnes per acre
- Very good shelf life and transportability
- Vigorous plant with uniformly set and firm fruits
- Excellent fruit grade out up to 90% in grade one

**Pack Sizes:**

- 1 gram: Foil Packet
- 2.5 grams: Foil Packet
- 5 grams: Foil Packet
- 10 grams: Foil Packet
- 25 grams: Foil Packet
- 50 grams: Tin
- 100 grams: Tin
- 250 grams: Tin
- 500 grams: Tin

**Resistances / Tolerances:**

- High bacterial wilt tolerant
- Fusarium Wilt (Fol: 1,2)
- Verticillium Wilt (Vd & Va)
- Bacterial Spot
- Nematode

**SANDOKAN F1:** *An excellent outdoor tomato with perfect oval shape*



**Characteristics:**

- Determinate
- Maturity 75 days from transplanting
- Fruit weight 150 grams
- Yield potential 30 tonnes per acre
- Excellent shelf life and transportability

**Pack Sizes:**

- 1 gram: Foil Packet
- 2.5 grams: Foil Packet
- 5 grams: Foil Packet
- 10 grams: Foil Packet
- 25 grams: Foil Packet
- 50 grams: Tin
- 100 grams: Tin
- 250 grams: Tin
- 500 grams: Tin

**Resistances / Tolerances:**

- Tomato Spotted Wilt Virus (TSWV)
- Fusarium Wilt (Fol: 1,2)
- Verticillium Wilt (Vd & Va)
- Bacterial Spot
- Nematode

**ONYX F1:** *An excellent determinate hybrid tomato with oval fruits*



**Characteristics:**

- Determinate
- Maturity 70 days from transplanting
- Fruit weight 100–110 grams
- Yield potential 18 tons per acre
- Early maturing
- Excellent shelf life with very firm fruit

**Pack Sizes:**

- 2.5 grams : Tin
- 5 grams: Tin
- 10 grams: Tin
- 25 grams: Tin
- 50 grams: Tin
- 100 grams: Tin
- 250 grams: Tin
- 500 grams: Tin

**Resistances / Tolerances:**



**STRIKE F1:** *An excellent determinate hybrid tomato with oval fruits*



**Characteristics:**

- Determinate
- Maturity 75 days from transplanting
- Fruit weight 120–130 grams
- Yield potential 20 tons per acre
- Excellent shelf life and transport quality

**Resistances / Tolerances:**

- Fusarium Wilt (Fol: 1, 2)
- Verticillium Wilt (Vd & Va)

**Pack Sizes:**

- 2.5 grams : Tin
- 5 grams: Tin
- 10 grams: Tin
- 25 grams: Tin
- 50 grams: Tin
- 100 grams: Tin
- 250 grams: Tin
- 500 grams: Tin

**TERMINATOR F1:** *A very vigorous, long determinate heavy yielding plant. Deep red coloured oval fruits.*



**Characteristics:**

- Determinate
- Maturity 75 days from transplanting
- Fruit weight 120 grams
- Yield Potential 30 tonnes per acre
- Long shelf life of up to 21 days at room temperature

**Resistances / Tolerances:**

- Tomato Yellow Leaf Curl Virus (TYLCV)
- Tomato Mosaic Virus
- Verticillium Wilt (Vd & Va)
- Grey Leaf Spot

**Pack Sizes:**

- 100 seeds: Foil Packet
- 500 seeds: Foil Packet
- 1000 seeds: Foil Packet
- 5 grams
- 10 grams
- 25 grams
- 50 grams
- 100 grams

**BRAVO F1:** *A premium green house tomato with oval fruits*



**Characteristics:**

- Indeterminate
- Maturity 75 days from transplanting
- Fruit weight 120 - 150 grams
- Yield potential 10-13 Kgs per Sq. M. in greenhouse & 62 tonnes per acre outdoors
- Long shelf life of up to 21 days at room temp
- Adapts well to a wide range of agro-ecological zones
- Long harvest period

**Resistances / Tolerances:**

- Tomato Yellow Leaf Curl Virus (TYLCV)
- Fusarium Wilt (Fol: 1,2)
- Verticillium Wilt (Vd & Va)
- Grey Leaf Spot
- Nematode

**Pack Sizes:**

- 100 seeds: Foil Packet
- 500 seeds: Foil Packet
- 1000 seeds: Foil Packet

**SUSANA:** *An excellent indeterminate hybrid tomato with oval fruits for greenhouse*



**Characteristics:**

- Indeterminate
- Maturity 60—75 days from transplanting
- Fruit weight 100—120 grams
- Yield potential 12—15 Kgs per plant with up to 10 fruits per cluster
- Excellent shelf life with very firm fruits

**Resistances / Tolerances:**

- Verticillium Wilt
- Fusarium Wilt
- Tomato Mosaic Wilt

**Pack Sizes:**

- 100 seeds: Foil Packet
- 500 seeds: Foil Packet
- 1000 seeds: Foil Packet

**SAMANTHA F1:** *Indeterminate type hybrid. Vigorous plant with good fruit setting*



**Characteristics:**

- Indeterminate
- Maturity 60 - 70 days after transplanting
- Fruit weight 90 - 95 grams
- Yield potential - results may vary considerably due to local conditions and cultural practice
- Suitable for regions with Bacterial Wilt problems
- Oblong shaped uniform fruits

**Resistances / Tolerances:**

- Intermediate resistance to Bacterial Wilt
- Intermediate resistance to Tomato Yellow Leaf Curl Virus
- Resistance to Tomato Mosaic Virus
- Resistance to F1 Fusarium Wilt
- Resistance to Fusarium Crown and Root Rot

**Pack Sizes:**

- 100 seeds: Foil Packet
- 500 seeds: Foil Packet
- 1000 seeds: Foil Packet

**ROCKY F1:** *Very vigorous, self-determinate heavy yielding. Deep red colour, large oval fruits.*



**Characteristics:**

- Determinate
- Maturity 75 days after transplanting
- Average weight 130—150 grams
- Yield potential - 30 tonnes per acre
- Strong plant with good cover
- Firm, very good shelf life (21 days)

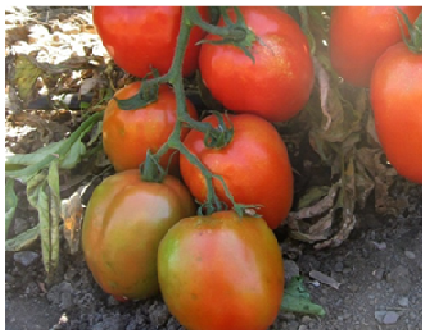
**Resistances / Tolerances:**

- Tomato yellow leaf curl virus (TYLCV)
- Tomato spotted wilt virus (TSWV)
- Bacterial Speck
- Verticillium Wilt (Vd. &Va.)
- Fusarium Wilt (Fol: 1)

**Pack Sizes:**

- 100 seeds: Foil Packet
- 500 seeds: Foil Packet
- 1000 seeds: Foil Packet

**GEM F1: *A Premium green house tomato with blocky heavy fruits.***



**Characteristics:**

- Indeterminate
- Maturity 75 days from transplanting
- Fruit weight 130–150 grams
- Yield potential 35–40 Kgs per Sq.M in greenhouse and 60 tons per acre outdoors
- Long shelf life of up to 21 days at room temperature
- Strong calyx retention and long harvest period
- Uniform clusters with 6 fruits average

**Pack Sizes:**

- 100 seeds: Foil Packet
- 500 seeds: Foil Packet
- 1000 seeds: Foil Packet

**Resistances / Tolerances:**

- Tomato Yellow Leaf Curl Virus (TYLCV)
- Cucumber Mosaic Virus (CMV)
- Tomato Mosaic Virus (ToMV)
- Fusarium Wilt (Fol: 1,2)
- Verticillium Wilt (Vd & Va)
- Grey Leaf Spot



African Seed Trade Association.  
Member



Seed Trade Association of Kenya  
Member.

Africa's leading supplier of open pollinated and hybrid seeds...

**royalseed**

...providing local solutions to a global market







## Cabbages

**PRETORIA F1:** *A hybrid fresh market cabbage with excellent heat tolerance.*



### Characteristics:

- Excellent field holding capacity
- Maturity 75 days from transplanting
- Head weight 4-5 Kgs
- Yield potential 60 tonnes per acre
- Excellent Wrapper leaves and heat tolerance
- Dark green in colour

### Resistances / Tolerances:

- Fusarium Yellow

### Pack Sizes:

- 1 grams: Foil Packet
- 2.5 grams: Foil Packet
- 5 grams: Foil Packet
- 10 grams: Foil Packet
- 25 grams: Foil Packet
- 50 grams: Tin
- 100 grams: Tin
- 250 grams: Tin
- 500 grams: Tin

**KIFARU F1:** *A hybrid fresh market cabbage with excellent heat tolerance.*



### Characteristics:

- A mid early hybrid with perfect round shape, very firm.
- Maturity—70—80 days from transplanting.
- Head weight—1.2—1.4 kg.
- Yield potential—40 tonnes per acre.
- Excellent uniformity in size, shape and maturity.
- Strong plant vigour, deep red colour, short core and good interior texture.

### Resistances / Tolerances:

- Fusarium Yellow

### Pack Sizes:

- 1000 seeds: Foil Packet

### Cabbage—“Interesting Facts”

- Cabbage is an excellent source of vitamin C.
- It also contains significant amounts of glutamine, an amino acid that has anti-inflammatory properties.
- Along with Broccoli and other Brassica vegetables, cabbage is a source of indole-3-carbinol, a chemical that boosts DNA repair in cells and appears to block the growth of cancer cells.
- In European folk medicine, cabbage leaves are used to treat acute inflammation.
- Fresh cabbage juice has also been shown to promote rapid healing of peptic ulcers.

Source: wikipedia.org

## FABIOLA F1: *An excellent hybrid cabbage with superior qualities*



### Characteristics:

- Superior field holding capacity
- Maturity 75 - 80 days from transplanting
- Head weight 5kg
- Yield potential 60 tons per acre
- Semi flat head shape with excellent wrapper leaves
- Heat tolerant with a field holding capacity of 21 days

### Pack Sizes:

2500 seeds: Foil Packet  
10000 seeds: Foil Packet

### Resistances / Tolerances:

- Ringspot
- Good Black Rot tolerance

## COPENHAGEN MARKET: *The great legendary cabbage*



### Characteristics:

- A well adapted cabbage with an exceptional taste
- Maturity 65 days from transplanting
- Head weight 2.5-3 Kgs
- Yield potential 30-35 tonnes per acre
- Early maturing and low crop protection cost
- Dark green in colour with a bright heart

### Pack Sizes:

10 grams: Foil Packet  
25 grams: Foil Packet  
50 grams: Tin  
100 grams: Tin  
250 grams: Tin  
500 grams: Tin

### Resistances / Tolerances:

## Broccoli

## GREENPIA *A vigorous healthy plant with good curd elevation*



### Characteristics:

- Very vigorous plant
- Suitable for fresh market and processing
- Maturity 60 Days from transplanting
- Head weight 400–600 grams
- Yield potential 6–9 tonnes per acre
- Dark green uniform dome shaped heads

### Pack Sizes:

100 seeds: Foil Packet  
500 seeds: Foil Packet  
1000 seeds: Foil Packet  
2500 seeds: Foil Packet

### Resistances / Tolerances:

- Tolerance against hollow core and cat eye

Africa's leading supplier of open pollinated and hybrid seeds...



...providing local solutions to a global market



# Cauliflower

**Whitefortress:** *A premium cauliflower ideal for fresh market*



### Characteristics:

- Very vigorous plant
- Maturity 70–75 days from transplanting
- Head weight: 1 KG
- Yield potential: 8–10 tonnes per acre
- Heavy dense curds with perfect self coverage from leaves
- Adapts well to a wide variety of agro-ecological zones

### Pack Sizes:

250 seeds  
500 seeds  
1000 seeds

TEL:+254 20 2690693.3562700,+254 725 549997,+254 734 257635,TOLL FREE No.0800720250  
EMAIL:info@khs.co.ke | WEBSITE:www.royalseed.biz | M-PESA PAYBILL NO.320350 | FREE SMS Service:22171  
ROYAL SEED UGANDA:+256 750 584620 | ROYAL SEED TANZANIA:+255 758 468446,+255 746 260144



**royalseed**  
QUALITY SEEDS FOR AFRICA

**TOLL FREE NO.**  
**0800720250**

These calls are free of charge.

Africa's leading supplier of open pollinated and hybrid seeds...



...providing local solutions to a global market







## Onions

### **BOMBAY RED:** *An excellent red onion with high market demand*



#### **Characteristics:**

- Very pungent onion
- Maturity 150 days from transplanting
- Very popular red onion with farmers and the market
- Yield potential 16 tonnes per acre
- Excellent shelf life and transportability
- Deep purple red colour

#### **Pack Sizes:**

5 grams: Foil Packet  
10 grams: Foil Packet  
25 grams: Foil Packet  
50 grams: Tin  
100 grams: Tin  
250 grams: Tin  
500 grams: Tin

#### **Resistances / Tolerances:**

### **RED CREOLE:** *A standard OP red onion with good market demand*



#### **Characteristics:**

- Well adapted to diverse climatic conditions
- Maturity 150 days from transplanting
- Ideal onion for the fresh market
- Yield potential 16 tonnes per acre
- Good storage quality
- Deep red colour

#### **Pack Sizes:**

10 grams: Foil Packet  
25 grams: Foil Packet  
50 grams: Tin  
100 grams: Tin  
250 grams: Tin  
500 grams: Tin

#### **Resistances / Tolerances:**

### **TEXAS EARLY GRANO:** *An excellent white onion with mild pungency*



#### **Characteristics:**

- A high yielding variety well adapted for the tropics
- Maturity 120 days from transplanting
- Very popular white onion with farmers and the market
- Yield potential 21 tonnes per acre
- Excellent shelf life and transportability
- White colour with golden exterior

#### **Pack Sizes:**

10 grams: Foil Packet  
25 grams: Foil Packet  
50 grams: Tin  
100 grams: Tin  
250 grams: Tin  
500 grams: Tin

#### **Resistances / Tolerances:**

## RED PINOY: *A very early maturing variety*



### Characteristics:

- Well adapted onion to both rain fed and irrigation
- Maturity only 90 days from transplanting
- Strong pungency
- Yield potential 25–30 tons per acre
- Long shelf life of up to 6 months at room temperature
- Deep red attractive bulbs with a high market demand

### Resistances / Tolerances:

- Downy Mildew
- Purple Blotch Tolerance

### Pack Sizes:

- 5 grams: Foil Packet
- 10 grams: Foil Packet
- 25 grams: Foil Packet
- 50 grams: Tin
- 100 grams: Tin
- 250 grams: Tin
- 500 grams: Tin

## RED KING F1: *A superior hybrid red onion*



### Characteristics:

- A short very strong plant with narrow neck
- Very uniform globe bulb shape
- Bright re-violet coloured skin with good pungency
- Dark/deep red scales and white flesh which develops into dark red rings once cured
- Excellent for fresh market and salads
- Shelf life up to 6 months
- Maturity 90 days after transplanting
- Yield potential 25-30 tons per acres

### Resistances / Tolerances:

### Pack Sizes:

- 1 gram
- 2.5 grams
- 5 grams
- 10 grams
- 25 grams
- 50 grams
- 100 grams
- 250 grams
- 500 grams

Africa's leading supplier of open pollinated and hybrid seeds...

**royalseed**

...providing local solutions to a global market



# INTRODUCING OUR KITCHEN GARDEN PACKS



## KITCHEN GARDEN PACKS

EASY ACCESS FOR FARMERS  
TO BUY CERTIFIED SEEDS  
AT AFFORDABLE PRICES

WIDE RANGE OF PRODUCTS  
NOW AVAILABLE

WE PROVIDE SOLUTIONS  
FOR GREATER  
PRODUCTION FOR  
FARMERS

ROYAL SEEDS FOCUSES ON  
QUALITY SEEDS FOR  
AFRICA

CROP	VARIETY	No. of GRAMS
Beetroot	Detroit Dark Red	4.00
Cabbage	Glory of Enkhuizen	4.00
	Copenhagen	4.00
Carrot	Nantes	4.00
Collards	Southern Georgia (Imported)	5.00
Coriander	Dhania	5.00
Cucumber	Ashley	2.00
Eggplant	Black Beauty	2.00
Kale	Thousand Headed (Imported)	5.00
Okra	Clemson Spineless	7.00
Bulb Onions	Red Creole	2.00
	Texas Grano	2.00
	Bombay Red	4.00
Onion	Evergreen	2.00
	Leek Italian Giant	2.00
Sweet Pepper	Yolo Wonder	2.00
	California Wonder	2.00
Squash	Waltham Butternut	3.00
	Green Zuchinni	3.00
Spinach	Fordhook Giant	3.00
Tomato	Oxly	2.00
	Faulu	2.00
Watermelon	Sugar Baby	8.00
	Crimson Sweet	8.00

Africa's leading supplier of open pollinated and hybrid seeds...



...providing local solutions to a global market







## Peppers

**SWEET PEPPER MAXIBELL:** *A refined open pollinated sweet pepper with heavy fruiting ability*



### Characteristics:

- Standard glossy green blocky fruits
- Maturity 75 days from transplanting
- Fruit weight 120-150 grams
- Yield potential 8 tonnes per acre
- Long shelf life
- Ideal for both green house and open field
- Deep green coloured fruits

### Pack Sizes:

- 5 grams: Foil Packet
- 10 grams: Foil Packet
- 25 grams: Foil Packet
- 50 grams: Tin
- 100 grams: Tin
- 250 grams: Tin
- 500 grams: Tin

### Resistances / Tolerances:

- Tobacco Mosaic Virus (TM1)
- Downy Mildew
- Purple Blotch Tolerance
- Anthocyanin Tolerance

**YOLO WONDER:** *A standard open pollinated variety with high market demand*



### Characteristics:

- Green blocky fruits
- Maturity 80 days from transplanting
- Fruit weight 100-120 grams
- Yield potential 6 tonnes per acre
- A vigorous, erect and compact plant adapted to warm climatic conditions
- Deep green coloured fruits

### Pack Sizes:

- 10 grams: Foil Packet
- 25 grams: Foil Packet
- 50 grams: Tin
- 100 grams: Tin
- 250 grams: Tin
- 500 grams: Tin

### Resistances / Tolerances:

- Tobacco Mosaic Virus (TM1)

**CALIFORNIA WONDER:** *A standard open pollinated variety with continuous picking*



### Characteristics:

- Sweet pepper with green blocky fruits
- Maturity 80 days from transplanting
- Fruit weight 100-120 grams
- Yield potential 6 tonnes per acre
- A very hardy, strong and vigorous plant
- Deep green coloured fruits turning red at full maturity

### Pack Sizes:

- 10 grams: Foil Packet
- 25 grams: Foil Packet
- 50 grams: Tin
- 100 grams: Tin
- 250 grams: Tin
- 500 grams: Tin

### Resistances / Tolerances:

---

**MINERVA F1:** *A very vigorous uniform and early yellow blocky pepper*



**Characteristics:**

- Early maturity and good fruit setting
- Maturity 70 days from transplanting
- Fruit weight 180-190 grams
- Uniform 4 lobed fruits, high marketability
- Long shelf life
- Ideal for greenhouse
- Green fruits turn to yellow coloured fruits rapidly

**Pack Sizes:**

100 seeds  
500 seeds  
1000 seeds

**Resistances / Tolerances:**

- Tobacco Mosaic Virus (L3)

---

**KORI F1:** *A very vigorous and cold tolerant blocky pepper*



**Characteristics:**

- Very good fruit setting
- Maturity 75 days from transplanting
- Fruit weight: 180–190 grams
- Yield potential: 8 tonnes per acre
- Compact leaves and rapid internodes growth
- Long shelf life
- Ideal for greenhouse
- Green fruits turn to deep red fruits rapidly

**Pack Sizes:**

100 seeds  
500 seeds  
1000 seeds

**Resistances / Tolerances:**

- Tobacco Mosaic Virus (L3)
- Tomato Spotted Wilt Virus

---

**BUFFALO F1:** *An early maturing vigorous plant*



**Characteristics:**

- Vigorous, very productive and open plant
- Uniform blocky shaped fruits
- Maturity 75–80 days from transplanting
- Fruit weight 220–240g
- Fruit length 10cm
- Fruit diameter 8.5cm
- Good fruit setting with thick & compact fruit wall

**Pack Sizes:**

10 grams: Foil Packet  
25 grams: Foil Packet  
50 grams: Tin  
100 grams: Tin  
250 grams: Tin  
500 grams: Tin

**Resistances / Tolerances:**

- High tolerance to Tomato Mosaic Virus L4







## Eggplant

**BLACK BEAUTY:** *Standard open pollinated variety with dark purple skin*



### Characteristics:

- A long picking period of up to 6 months
- A large bush plant with egg shaped fruits
- Maturity 90 days from transplanting
- Excellent flavour
- Yield potential 4-6 fruits per plant

### Resistances / Tolerances:

### Pack Sizes:

10 grams: Foil Packet  
 25 grams: Foil Packet  
 50 grams: Tin  
 100 grams: Tin  
 250 grams: Tin  
 500 grams: Tin

**LONG PURPLE:** *Standard variety with purple skin*



### Characteristics:

- Good quality fruits with a good market demand
- Tall and upright plant with slender oblong fruits
- Maturity 85 days from transplanting
- Excellent flavour
- Yield potential 6-8 fruits per plant

### Resistances / Tolerances:

### Pack Sizes:

10 grams: Foil Packet  
 25 grams: Foil Packet  
 50 grams: Tin  
 100 grams: Tin  
 250 grams: Tin  
 500 grams: Tin

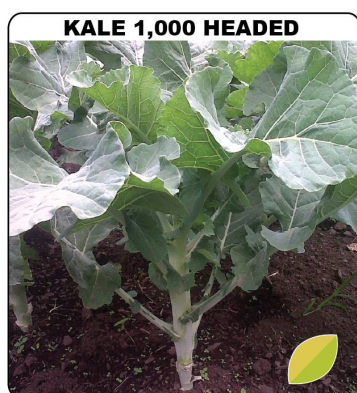
### Eggplant—Useful Information:

- The **eggplant, aubergine, melongene, brinjal** or **guinea squash** (*Solanum melongena*) is a plant of the family Solanaceae (also known as the nightshades) and genus *Solanum*. It bears a fruit of the same name, commonly used in cooking. As a nightshade, it is closely related to the tomato and potato.
- It is a delicate perennial often cultivated as an annual. It grows 40 to 150 cm (16 to 57 in) tall, with large coarsely lobed leaves that are 10 to 20 cm (4–8 in) long and 5 to 10 cm (2–4 in) broad. Semiwild types can grow much larger, to 225 cm (7 ft) with large leaves over 30 cm (12 in) long and 15 cm (6 in) broad. The stem is often spiny. The flowers are white to purple, with a five-lobed corolla and yellow stamens.
- The fruit is fleshy, has a meaty texture, and is less than 3 cm (1.2 in) in diameter on wild plants, but much larger in cultivated forms. The fruit is botanically classified as a berry and contains numerous small, soft seeds which are edible, but have a bitter taste because they contain nicotinoid alkaloids; this is unsurprising as it is a close relative of tobacco.



## Kale and Collard

### KALE - THOUSAND HEADED: *A tall long picking period succulent kale*



#### Characteristics:

- Vigorous plants with many side branches
- Very leafy product with continuous picking
- Maturity 60 days from planting
- Indeterminate very hardy product with ability to recover easily
- Yield potential 8 tonnes per acre
- Very good heat tolerance
- Light green coloured leaf

#### Resistances / Tolerances:

#### Pack Sizes:

- 10 grams: Foil Packet
- 25 grams: Foil Packet
- 50 grams: Tin
- 100 grams: Tin
- 250 grams: Tin
- 500 grams: Tin

### COLLARD SOUTHERN GEORGIA: *A large dark green leafed product*



#### Characteristics:

- Loose headed plant with heavy ribs and spreading leaves
- Average weight 1 kg per plant
- Maturity 60 days from planting
- Determinate very leafy plant
- Yield potential 6 tonnes per acre
- Good heat tolerance
- Dark green coloured leaf

#### Resistances / Tolerances:

#### Pack Sizes:

- 10 grams: Foil Packet
- 25 grams: Foil Packet
- 50 grams: Tin
- 100 grams: Tin
- 250 grams: Tin
- 500 grams: Tin

#### *Kale - Nutritional Value:*

Kale is very high in beta carotene, vitamin K, vitamin C, lutein, zeaxanthin, and reasonably rich in calcium. Kale, as with broccoli and other brassicas, contains sulforaphane (particularly when chopped or minced), a chemical with potent anti-cancer properties. Boiling decreases the level of sulforaphane; however, steaming, microwaving, or stir frying do not result in significant loss. Along with other brassica vegetables, kale is also a source of indole-3-carbinol, a chemical which boosts DNA repair in cells and appears to block the growth of cancer cells. Kale is also a good source of carotenoids.

#### *Collard - Nutritional Vale:*

Widely considered to be a healthy food, collards are good sources of vitamin C and soluble fiber, and contain multiple nutrients with potent anticancer properties, such as diindolylmethane and sulforaphane. Roughly a quarter pound (approx. 100 g) of cooked collards contains 46 Calories. Researchers at the University of California at Berkeley have recently discovered that 3,3'-diindolylmethane in *Brassica* vegetables such as collard greens is a potent modulator of the innate immune response system with potent antiviral, antibacterial and anticancer activity.

Source: wikipedia.org





## Swiss Chard

**FORDHOOK GIANT: An excellent standard OP variety**



### Characteristics:

- Very good producer and heat resistant
- Plant Height: 65 cm
- Very dark green colour leaves
- Leaves are large and heavily crumpled
- Maturity: 60 - 70 days from transplanting

### Advantages / Tolerances:

### Pack Sizes:

10 grams: Foil Packet  
 25 grams: Foil Packet  
 50 grams: Tin  
 100 grams: Tin  
 250 grams: Tin  
 500 grams: Tin

TEL:+254 20 2690693.3562700,+254 725 549997,+254 734 257635,TOLL FREE No.0800720250  
 EMAIL:info@khs.co.ke | WEBSITE:www.royalseed.biz | M-PESA PAYBILL NO.320350|FREE SMS Service:22171  
 ROYAL SEED UGANDA:+256 750 584620|ROYAL SEED TANZANIA:+255 758 468446,+255 746 260144

royalseed  
 QUALITY SEEDS FOR AFRICA

TOLL FREE NO.  
**0800720250**  
 These calls are free of charge.

royalseed  
 FOR CONSISTENT SUPPLY OF QUALITY SEED

royalseed  
 FOR GREATER PRODUCTION

Africa's leading supplier of open pollinated and hybrid seeds...



...providing local solutions to a global market







## Lettuce

**ICEBURG:** *A crisp head lettuce that is well suited to warmer climatic conditions*



### Characteristics:

- A crisp head ice burg type hybrid lettuce
- Maturity: 60 - 65 days from transplanting
- Head size: medium - large
- Head colour: medium dark green
- Very good head solidity and uniformity
- Slow reaction to bolting

### Pack Sizes:

100 seeds: Foil Packet  
500 seeds: Foil Packet  
1000 seeds: Foil Packet

### Advantages / Tolerances:

- Slow to bolt

**WAIKIKI:** *A large crisp head iceberg lettuce*



### Characteristics:

- A large crisp head iceberg lettuce suitable for the fresh and processing market
- It's an early variety 60—65 days
- High plant vigour and suitable head size
- Excellent basal closure and uniformity

### Pack Sizes:

100 seeds  
500 seeds  
1000seeds  
5000 seeds

### Advantages / Tolerances:

- Slow reaction to bolting

**METEORE:** *A medium size butter head lettuce*



### Characteristics:

- A medium size butter head lettuce
- Suitable for both the fresh and processing segment
- A medium dark green colour
- A high quality presentation

### Pack Sizes:

100 seeds  
500 seeds  
1000 seeds  
5000 seeds

### Advantages / Tolerances:

- Excellent tip burn tolerance



## Squash

**DYNASTY F1:** *A very dark green cylindrical hybrid squash*



### Characteristics:

- Dark bright green smooth
- Very straight cylindrical fruits
- Approx. 20–22 cm long
- Very productive
- Fresh market and processing
- Slow seed development
- Single stem plant

### Resistances / Tolerances:

- Zucchini Yellow Virus
- Intermediate resistances, (IR): Px, ZYMV

### Pack Sizes:

- 5 grams
- 10 grams
- 25 grams
- 50 grams

## Zucchini

**GREEN ZUCHINNI:** *A dark green cylindrical Zucchini*



### Characteristics:

- Vigorous, very productive and open plant
- Produces a constant abundance of exceptionally dark green shiny fruits
- Maturity 45 days from transplanting
- Yield potential 2 tonnes per acre
- Good fruit setting

### Pack Sizes:

- 10 grams: Foil Packet
- 25 grams: Foil Packet
- 50 grams: Tin
- 100 grams: Tin
- 250 grams: Tin
- 500 grams: Tin



## Butternut

**WALTHAM:** *A superior Waltham that is highly nutritious*



### Characteristics:

- Very uniform fruits with a good yield
- Very nutritious with excellent flavour and deep orange coloured fruit
- Maturity 90-100 after planting
- Yield potential 5-6 tonnes per acre
- Excellent shelf life of up to 6 months

### Pack Sizes:

10 grams: Foil Packet  
25 grams: Foil Packet  
50 grams: Tin  
100 grams: Tin  
250 grams: Tin  
500 grams: Tin

### Resistances / Tolerances:

**ATLAS F1:** *Large uniform fruit excellent for fresh and processing market*



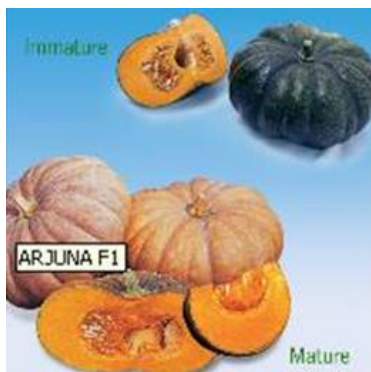
### Characteristics:

- Healthy productive and very vigorous semi-bush plants
- Less susceptible to diseases and well adapted to hot and cool climates alike
- Maturity 95-105 days after planting
- Yield potential 12-18 tonnes per acre
- Fruit weight 2-3 Kgs
- Very uniform fruit with an excellent shelf life of up to 6 months
- Excellent flavour with attractive orange colour and high sugar content

### Pack Sizes:

100 seeds: Foil Packet

**ARJUNA F1 PUMPKIN** *An excellent tasting, well known variety of pumpkin*



A well known variety in most of Asia. Arjuna is suitable for harvesting either immature green or fully mature red brown, depending on what the market requires.

### Pack Sizes:

85 seeds

Mature fruits have a shelf life of 4 - 6 weeks. It has proven to be an extremely high yielder with well developed plants producing 3 - 4 fruits.

Its flesh is firm, sticky, yellowish orange in colour and tastes excellent.





## Water Melon

**SUGAR BABY:** *An excellent open pollinated variety well suited to tropical areas*



### Characteristics:

- Very attractive product with a high market demand
- Open field variety with low production costs
- Maturity 105 days from planting
- Fruit weight 7-8 Kgs
- Yield potential 20-30 tonnes per acre
- Good heat tolerance and shelf life
- Deep red colour

### Pack Sizes:

- 10 grams: Foil Packet
- 25 grams: Foil Packet
- 50 grams: Tin
- 100 grams: Tin
- 250 grams: Tin
- 500 grams: Tin

**ANDAMAN 636 F1:** *A vigorous hybrid water melon with dark glossy fruits*



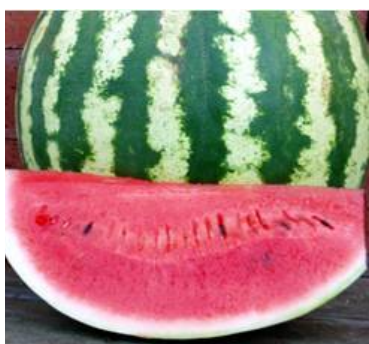
### Characteristics:

- Super red with deep red internal appearance
- Also ideal green house product for rotation with tomatoes
- Maturity 80-85 days from planting
- Fruit weight 8 Kgs.
- Yield potential 25-35 tonnes per acre
- Very sweet and crispy taste with high Brix of 13
- Very strong vine for easy fruit setting

### Pack Sizes:

- 100 seeds: Foil Packet
- 500 seeds: Foil Packet

**CRIMSON SWEET:** *A very vigorous large fruit hybrid watermelon*



### Characteristics:

- A blocky round fruit with deep red colour flesh, firm and crispy
- Maturity 85 days from transplanting
- Fruit weight 8 - 10 Kgs
- Yield potential 25 - 30 tonnes per acre
- Light and dark green stripes on external skin

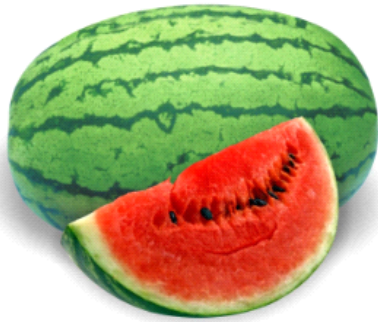
### Pack Sizes:

- 10 grams: Foil Packet
- 25 grams: Foil Packet
- 50 grams: Tin
- 100 grams: Tin
- 250 grams: Tin
- 500 grams: Tin

### Resistances / Tolerances:

- Fusarium
- Anthracnose

## ASALI F1: *A superior watermelon with high yield and excellent storage ability*



### Characteristics:

- A very popular hybrid with oblong shaped fruits and very sweet red flesh
- Maturity 85 days from planting
- Fruit weight 10 - 12 Kgs
- Yield potential 30 - 40 tonnes per acre
- Plant vigour very strong with green striped skin
- Excellent storage and transportability traits

### Resistances / Tolerances:

- Fusarium
- Anthracnose

### Pack Sizes:

- 2.5 grams: Foil Packet
- 5 grams: Foil Packet
- 10 grams: Foil Packet
- 25 grams: Foil Packet
- 50 grams: Tin
- 100 grams: Tin
- 250 grams: Tin
- 500 grams: Tin

## SWEET MELON GALIA F1: *An excellent medium early Galia Hybrid*



### Characteristics:

- It has a yellowish brown rind with good net
- Fruits are round with light green juicy and sweet flesh
- Firm texture and sweet aroma
- Maturity 65–70 days from transplanting
- Fruit weight 1.25–1.5 kgs
- Yield potential: 20–25 tones per acre

### Resistances / Tolerances:

- Fusarium
- Anthracnose

### Pack Sizes:

- 2.5 grams: Foil Packet
- 5 grams: Foil Packet
- 10 grams: Foil Packet
- 25 grams: Foil Packet
- 50 grams: Tin
- 100 grams: Tin
- 250 grams: Tin
- 500 grams: Tin

## Nutrition

A watermelon contains about 6% sugar and 91% water by weight. As with many other fruits, it is a source of vitamin C. The amino-acid citrulline was first extracted from watermelon and analyzed. Watermelons contain a significant amount of citrulline and after consumption of several kilograms, an elevated concentration is measured in the blood plasma; this could be mistaken for citrullinaemia or other urea cycle disorders.

Watermelon rinds, usually a light green or white colour, are also edible and contain many hidden nutrients but most people avoid eating them due to their unappealing flavour. They are sometimes used as a vegetable. In China, they are stir-fried, stewed or more often pickled. When stir-fried, the skin and fruit is removed, and the rind is cooked with olive oil, garlic, chilli peppers, scallions, sugar and rum. Pickled watermelon rind is also commonly consumed in the Southern US. Watermelon juice can be made into wine.

Watermelon is mildly diuretic and contains large amounts of carotenoids. Watermelon with red flesh is a significant source of lycopene. Preliminary research indicates the consumption of watermelon may have antihypertensive effects.

Africa's leading supplier of open pollinated and hybrid seeds...

royalseed

...providing local solutions to a global market







## Leek

**ITALIAN GIANT:** *An excellent white long stem leek*



### Characteristics:

- Plants are large and erect growing with large blue-green leaves
- The stem is thick and long - 30cm
- Strong and very productive
- Maturity 90 days from planting
- Yield potential 6 tonnes per acre

### Pack Sizes:

10 grams: Foil Packet  
 25 grams: Foil Packet  
 50 grams: Tin  
 100 grams: Tin  
 250 grams: Tin  
 500 grams: Tin



## Bunching Onions

**GREEN: EVERGREEN:** *An early maturing bunching onion*



### Characteristics:

- Long pure white stalks up to 50 cm
- Maturity: 110 days from sewing
- Very good yield with excellent uniformity
- Yield potential: 3 - 3.5 tonnes per acre
- Tender and delicious taste

### Advantages / Tolerances:

### Pack Sizes:

10 grams: Foil Packet  
 25 grams: Foil Packet  
 50 grams: Tin  
 100 grams: Tin  
 250 grams: Tin  
 500 grams: Tin



# Sweetcorn

**OVERLAND** *An excellent performer with very sweet cobs*



### Characteristics:

- Plant height: 195 cm
- Ear height: 70 cm
- Cob length: 20 cm
- Cob colour: Golden yellow
- Maturity: 55 days
- Excellent for fresh market and processing

### Pack Sizes:

- 500 g
- 1 kg
- 25 kg

### Advantages / Tolerances:

- Good shelf life
- High yield potential
- Strong vegetative plant
- Tolerant to Stewarts Wilt
- Tolerant to Northern Corn Leaf Blight
- Tolerant to Southern Corn Leaf Blight

# Lucerne / Alfalfa

**LUCERNE/ALFALFA WL 625 HQ:** *A high yielding Lucerne with excellent quality & standability*



### Characteristics:

- Very non dormant 9.2
- High yield across a wide range of soil types and harvest schedules
- Outstanding crude protein, % TDN and digestibility
- Dark green, leafy, fine stemmed and tolerant leaf disease
- Outstanding persistence potential under intensive harvest management
- Maturity: 35–40 days

### Pack Sizes:

- 500 g
- 1 kg
- 20 kg

### Advantages / Tolerances:

- Tolerant to all major insect, disease and nematode pests
- High yield
- Very fast recovery after cutting
- Spotted Alfalfa Aphid
- Pea Aphid
- Blue Alfalfa Aphid
- Phytophthora Root Rot
- Fusarium Wilt
- Root Knot Nematode
- Stem Nematode



## Beetroot

**DETROIT DARK RED:** An excellent standard OP variety, well adapted



### Characteristics:

- A prolific producer with good heat tolerance
- Fruit shape: globe
- Fruit colour: uniform dark red
- Maturity: 60 - 65 days from transplanting

### Advantages / Tolerances:

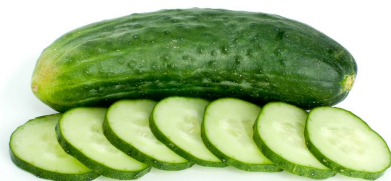
### Pack Sizes:

- 10 grams: Foil Packet
- 25 grams: Foil Packet
- 50 grams: Tin
- 100 grams: Tin
- 250 grams: Tin
- 500 grams: Tin



## Cucumber

**ASHLEY:** An excellent slicing cucumber



### Characteristics:

- A white spined fruit type grown on vigorous plant
- Fruit length: 19 - 21 cm
- Fruit colour: medium dark green
- Maturity: 70 days from transplanting
- Excellent for outdoor and in greenhouse

### Advantages / Tolerances:

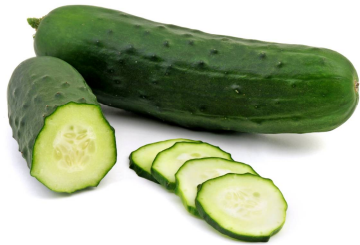
- Intermediate tolerance to Downy Mildew

### Pack Sizes:

- 10 grams: Foil Packet
- 25 grams: Foil Packet
- 50 grams: Tin
- 100 grams: Tin
- 250 grams: Tin
- 500 grams: Tin

## PRINCE F1: *Very productive slicer cucumber*

### CUCUMBER PRINCE F1



#### Characteristics:

- Slicer cucumber
- Average fruit length: 22 cm
- Very productive
- Dark green fruit with good shelf life
- Powdery Mildew resistant
- Good plant vigor
- High quality fruit

#### Pack Sizes:

100 seeds  
500 seeds  
1000 seeds

#### Advantages / Tolerances:

- Sphaerothecafuliginea (now Podosphaeriaanthii) Powdery Mildew
- Cucumber mosaic cucumovirus, cucumber mosaic
- Cucumber vein yellowing ipomovirus, cucumber vein yellowing



## Herbs

### BASIL MONICA: *Very uniform, semi compact variety for large scale farming and pot producer*



- Dark green thick leaves
- Good improved shelf life and flavour

Monica is a vigorous new Genovese type showing intermediate resistance to DOWNEY MILDEW

TEL:+254 20 2690693.3562700,+254 725 549997,+254 734 257635,TOLL FREE No.0800720250  
EMAIL:info@khs.co.ke | WEBSITE:www.royalseed.biz | M-PESA PAYBILL NO.320350|FREE SMS Service:22171  
ROYAL SEED UGANDA:+256 750 584620|ROYAL SEED TANZANIA:+255 758 468446,+255 746 260144





## Products for Export

### Baby Corn

**PAC 321:** *An excellent true Baby Corn and early maturing*



#### Characteristics:

- Average ears per plant = 3
- Excellent uniform yellow colour cobs, superb quality
- Regular ovule arrangement
- Excellent grade-out
- Maturity 50 days

#### Advantages / Tolerances:

- A true Baby Corn
- High yield
- Intermediate tolerance to Downy Mildew

#### Pack Sizes:

- 1 Kg
- 25 Kg

**SG18:** *Attractive pod shape and colour. Fast moving in supermarkets*



#### Features:

- Good conical cobs with excellent colour
- First time harvest 52–59 days
- 2–3 cobs per plant
- Dehusk Yield Weight Potential 1.3–13.8 tons per HA.

#### Benefits:

- Fast moving product in supermarkets— attractive cob shape and colour
- Uniform conical cob shape
- Male sterile
- Excellent cob shape
- Excellent cob quality
- Excellent taste
- NO TIP DAMAGE

#### Pack Sizes:

- 1 Kg

#### *How Nutritious Is Baby Corn?*

Baby corn is high in folate, a B-vitamin; four ounces provides 31% of the RDA. It is a good source of several other nutrients too: the same serving size also provides 13 percent of the potassium, 14 percent of the B-6, 10 percent of the riboflavin, 17 percent of the vitamin C and 11 percent of the fiber adults need each day.<sup>1</sup>

Yellow corn contains carotenoids,<sup>2</sup> which are substances that may help prevent coronary artery disease, certain cancers, and cataracts. In particular, yellow corn is abundant in two carotenoids, zeaxanthin and lutein, which keep eyes healthy. The more yellow the corn is, the more carotenoids it contains, since these compounds provide plants with colour. Baby corn, being pale, would carry lesser amounts of these carotenoids than mature corn.



## French Beans

**SERENGETI:** *A fine bean with beautiful pods*



### Characteristics:

- Pod length: 14 - 16 cm
- Pod diameter: 6 - 8 mm
- Pod shape: circular and straight
- Pod colour: uniform dark green glossy
- Plant habit: medium erect bush
- Plant height: medium
- Maturity: 55 days

### Advantages / Tolerances:

- Good shelf life
- High yields potential
- Strong vegetative plant
- Tolerant to Rust
- Tolerant to Bean Common Mosaic
- Tolerant to Anthracnose

### Pack Sizes:

100,000 seeds

**BOSTON:** *A fine bean well suited to warmer climatic conditions*



### Characteristics:

- Pod length: 14 - 15 cm
- Pod diameter: 8 - 9 mm
- Pod shape: circular and straight
- Pod colour: uniform dark green
- Plant habit: medium erect bush
- Plant height: medium
- Maturity: 56 days

### Advantages / Tolerances:

- Good shelf life
- High yield potential
- Strong vegetative plant
- Tolerant to Bean Common Mosaic
- Tolerant to Anthracnose

### Pack Sizes:

5,000 seeds  
100,000 seeds

**BELCAMPO:** *An extra fine / fine bean with vigorous growth well suited to heavy soils*



**Characteristics:**

- Pod length: 12 - 13 cm
- Pod diameter: 6 - 8 mm
- Pod shape: circular and straight
- Pod colour: Medium dark green
- Plant habit: Medium erect bush
- Plant height: medium
- Maturity: 54 days

**Advantages / Tolerances:**

- Good shelf life
- High yield potential
- Strong vegetative plant
- Tolerant to Bean Common Mosaic
- Tolerant to Anthracnose

**Pack Sizes:**

- 5,000 seeds
- 100,000 seeds

**LOMAMI:** *An extra fine / fine bean with vigorous growth well suited to heavy soils*



**Characteristics:**

- Pod length: 12 - 13 cm
- Pod diameter: 6 - 8 mm
- Pod shape: circular and straight
- Pod colour: medium dark green
- Plant habit: medium erect bush
- Plant height: medium
- Maturity: 54 days

**Advantages / Tolerances:**

- Good shelf life
- High yield potential
- Strong vegetative plant
- Tolerant to Bean Common Mosaic
- Tolerant to Anthracnose

**Pack Sizes:**

- 5,000 seeds
- 100,000 seeds

**HAWAII:** *An extra fine bean with excellent plant habit and pod uniformity*



**Characteristics:**

- Pod length: 11 - 13 cm
- Pod diameter: < 6.5 mm 75%, 6.5 - 8 mm 25%
- Pod shape: circular and straight
- Pod colour: uniform green glossy
- Plant habit: medium erect bush
- Plant height: medium
- Maturity: 65 days

**Advantages / Tolerances:**

- Good shelf life
- High yield potential for extra fine
- Strong vegetative plant
- Tolerant to Anthracnose
- Tolerant to Bean Common Mosaic
- Tolerant to PsP (Halo Blight)

**Pack Sizes:**

- 100,000 seeds



**MOONSTONE:** *An extra fine/ fine bean with excellent plant habit and pod uniformity*



**Characteristics:**

- Pod length: 13 - 15 mm
- Pod diameter: 6 - 8 mm 30%, 8—9 mm 70%
- Pod shape: circular and straight
- Pod colour: uniform dark green glossy
- Plant habit: Medium erect bush
- Plant height: medium
- Maturity: 55 days

**Advantages / Tolerances:**

- Good shelf life
- High yield potential
- Strong vegetative plant
- Tolerant to Rust
- Tolerant to Bean Common Mosaic
- Tolerant to PsP

**Pack Sizes:**

100,000 seeds

**PICASSO:** *An extra fine / fine bean with excellent plant habit and pod uniformity*



**Characteristics:**

- Pod length: 13 - 15 cm
- Pod diameter: 6 - 8 mm 40%, 8 - 9 mm 60%
- Pod shape: circular and straight
- Pod colour: uniform dark green glossy
- Plant habit: medium erect bush
- Plant height: medium
- Maturity: 57 days

**Advantages / Tolerances:**

- Good shelf life
- High yield potential
- Strong vegetative plant
- Tolerant to Rust
- Tolerant to Bean Common Mosaic
- Tolerant to PsP

**Pack Sizes:**

100,000 seeds

**GOLDPLAY:** *An extra fine yellow wax bean with excellent plant habit and pod uniformity*



**Characteristics:**

- Pod length: 11—12 cm
- Pod diameter: 6.5—8 mm 65%, 8—9 mm 35%
- Pod shape: circular and straight
- Pod colour: uniform golden yellow
- Plant habit: medium erect bush
- Plant height: medium
- Maturity: 65 days

**Advantages / Tolerances:**

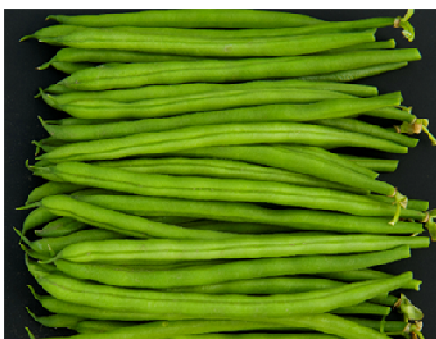
- Good shelf life
- Strong vegetative plant
- Tolerant to Anthracnose
- Tolerant to Bean Common Mosaic
- Tolerant to PsP (Halo Blight)

**Pack Sizes:**

5,000 seeds

100,000 seeds

**SEAGULL: *An extra fine / fine bean with excellent plant habit and pod uniformity***



**Characteristics:**

- Pod length: 13—14 cm
- Pod diameter: 6.5—8mm 70%, 8—9 mm 30%
- Pod shape: circular and straight
- Pod colour: medium dark green
- Plant habit: medium erect bush
- Plant height: medium
- Maturity: 65 days

**Pack Sizes:**

5,000 seeds  
100,000 seeds

**Advantages / Tolerances:**

- Good shelf life
- Strong vegetative plant
- Tolerant to Bean common Mosaic
- Tolerant to PsP (Halo Blight)
- Intermediate tolerance to rust



## Garden Peas

**SOMERWOOD: *A variety with excellent stress tolerance and large pods***



**Characteristics:**

- Pod length: 10 cm
- Seeds per pod: 9
- Pods: straight and medium green
- Average nodes until first flowering: 14
- Maturity: 75 days

**Pack Sizes:**

1 Kg  
25 Kg

**Advantages / Tolerances:**

- Dark green seeds
- Constant high yield
- Intermediate tolerance to Powdery Mildew

**GREEN FEAST: *A standard variety well adapted to warmer climatic conditions***



**Characteristics:**

- Pod length 10 cm
- Seeds per pod: 9
- Pods: straight and dark green
- Average nodes until first flowering: 14
- Maturity: 75 days

**Pack Sizes:**

1 Kg  
25 Kg

**Advantages / Tolerances:**

- Dark green seeds
- Well adapted to warm climatic conditions
- Very high yield

**MUCIO:** *Large podded main crop variety. Performs well under stressful conditions.*



**Characteristics:**

- Large pod type
- High ovule count
- Constant high yield
- Strong root system
- Well adapted to stressful conditions
- Well adapted to hotter climates

**Advantages / Tolerances:**

- Plant type: Standard leaf
- Average No. Of seeds per pod: 9
- Average nodes till first flowering: 14
- Plant height: 65–70 cm
- Heat units: 825 C
- Seed colour: medium green
- Pod shape: pointed
- Pods per axil: 2
- TSW: 210g
- HR: Ep
- IR: Fop: 1

**Pack Sizes:**

Grading	7.5 - 8.75 mm	8.75 - 10 mm	> 10 mm
TM 120	5	60	35





## Snap Peas

**CASCADIA:** *A standard leaf snap pea variety*



**Characteristics:**

- Pod length: 8 cm
- Pods: straight and dark green
- Average nodes until first flowering: 16
- Maturity: 75 days

**Advantages / Tolerances:**

- Uniform attractive dark green pods
- Well adapted to warmer climatic conditions
- Very high yield
- Intermediate tolerance to Powdery Mildew

**Pack Sizes:**

1 Kg  
25 Kg

## Snow Peas

**SWEET HORIZON:** *A semi stringless variety*



**Characteristics:**

- Pod length: 9 - 10 cm
- Pods: straight, flat and dark green
- Average nodes until first flowering: 16
- Maturity: 72 days

**Advantages / Tolerances:**

- Straight dark green pods
- Semi stringless
- Very high yielding, strong and vigorous plants
- Intermediate tolerance to powdery Mildew

**Pack Sizes:**

1 Kg  
25 Kg

**OREGON SUGAR POD 11:** *A leaf variety with good heat tolerance*



**Characteristics:**

- Pod length: 9 cm
- Pods: straight, flat and dark green
- Average nodes until first flowering: 16
- Maturity: 72 days

**Advantages / Tolerances:**

- Straight dark green pods
- Very vigorous plants
- Intermediate tolerance to Powdery Mildew

**Pack Sizes:**

1 Kg  
25 Kg



## Hot Peppers

**BANDAI F1:** *A very vigorous hybrid producing high yields*



### Characteristics:

- Very pungent short aromatic fruits with smooth walls
- Strong plants with upward bearing fruit
- Often referred to as 'Birds eye' or 'Rocket' chilli
- Maturity: 70 - 75 days from transplanting
- Fruit length: 4 - 5 cm
- Diameter: 0.9 cm
- Yield potential: 6 - 7 tonnes per acre
- Harvest period: 2 - 3 months
- Fruits mature from medium green colour to red

### Pack Sizes:

50 grams: Foil Packet

### Advantages / Tolerances:

- Intermediate tolerance to Bacteria Wilt

**DEMON F1:** *A very vigorous variety with a reliable performance in a range of different growing conditions*



### Characteristics:

- High pungency fruits
- Plants are tall with a concentrated upright bearing fruit set
- Excellent and uniform fruit quality
- Maturity: 70 - 75 days from transplanting
- Fruit length: 7 - 9 cm
- Diameter: 0.9 cm
- Yield potential: 6 - 7 tonnes per acre
- Harvest period: 2 - 3 months
- Fruits mature from medium green colour to bright red

### Pack Sizes:

50 grams: Tin

### Advantages / Tolerances:

- Good tolerance to common field diseases

**DEMON ORANGE F1:** *A very vigorous variety with a reliable performance in a range of different growing conditions*



**Characteristics:**

- High pungency fruits
- Plants are tall with a concentrated upright bearing fruit set
- Excellent and uniform fruit quality
- Maturity: 70 - 75 days from transplanting
- Fruit length: 7 - 9 cm
- Diameter: 0.9 cm
- Yield potential: 6 - 7 tonnes per acre
- Harvest period: 2 - 3 months
- Fruits mature from medium green colour to bright red

**Advantages / Tolerances:**

- Good tolerance to common field diseases

**Pack Sizes:**

50 grams: Tin

**DAIYA 619 F1:** *A compact and dense erect plant habit*



**Characteristics:**

- Very pungent fruits
- Compact plants with downward bearing fruits
- Maturity: 60 - 65 days from transplanting
- Fruit length: 5 - 6 cm
- Diameter: 0.9 cm
- Yield potential: 6 - 7 tonnes per acre
- Harvest period: 2 - 3 months
- Fruits mature from dark green colour to bright red

**Advantages / Tolerances:**

- Good tolerance to common field diseases

**Pack Sizes:**

50 grams: Tin

**ARENAL F1:** *A medium vigorous plant with good fruit shape and medium pungency*



**Characteristics:**

- Maturity—70—75 days
- Plant vigor: medium
- Length: 8—10 cm
- Diameter: 2—3 cm
- Fruit immature colour: green
- Fruit mature colour: red
- Wall thickness: medium
- Pungency: medium

**Advantages / Tolerances:**

**Pack Sizes:**

50 grams: Tin





## Papaya

**SINTA F1:** *A gynodioecious papaya hybrid*



### Characteristics:

- All plants bear fruits. Female fruits are round, and hermaphrodite fruits are oblong
- Average fruit weight: approx. 2 Kgs
- Maturity: 270 days after transplanting
- Flesh is deep yellow, firm and sweet with 14% sugar content
- Plant habit: semi-dwarf

### Pack Sizes:

10 seeds: Foil Packet

### Advantages / Tolerances:

- Intermediate tolerance to Papaya Ring Spot Virus

**RED ROYALE F1:** *A vigorous hybrid with excellent setting ability*



### Characteristics:

- A vigorous hybrid with evident dwarf plant habit
- Strong thick stems
- Good level of virus resistance
- Excellent setting ability
- Med-large size fruit with thick flesh
- Attractive red colour and very sweet
- Maturity 8-9 months after planting
- Weight 1.7 - 2.3 Kgs

### Pack Sizes:

10 seeds: Foil Packet

### Advantages / Tolerances:

- Intermediate tolerance to Papaya Ring Spot Virus

Africa's leading supplier of open pollinated and hybrid seeds...

**royalseed**

...providing local solutions to a global market



**VEGA F1:** A vigorous hybrid with semi-dwarf plant habit and good fruit setting ability



**Characteristics:**

- A vigorous hybrid with semi-dwarf plant habit
- Good fruit setting ability
- High yield potential
- Medium fruit size with attractive red flesh
- Firm fruits, very sweet
- Maturity 8–9 months after transplanting
- Weight: 1–1.2 kg
- Brix % - 12–14

**Pack Sizes:**

10 seeds: Foil Packet

**Advantages / Tolerances:**

- Intermediate tolerance to Papaya Ring Spot Virus



## Asian Vegetables

**OKRA: CLEMSON SPINELESS:** *An excellent standard OP variety*



**Characteristics:**

- Very uniform and prolific producer
- Fruit length 16 cm
- Fruit colour: rich green
- Maturity: 70 days from planting
- Fruits are straight, tapered and 5 angled

**Pack Sizes:**

10 grams: Foil Packet  
25 grams: Foil Packet  
50 grams: Tin  
100 grams: Tin  
250 grams: Tin  
500 grams: Tin

**Advantages / Tolerances:**

Africa's leading supplier of open pollinated and hybrid seeds...



...providing local solutions to a global market





Product	Variety	Spacing (cm)	Seed rate / acre	Plant population / acre
OUTDOOR TOMATOES(F1)	Rambo F1	60 x 60	50g	11,000
	Sandokan F1	60 x 60	50g	11,000
	Onyx F1	60 x 60	50g	11,000
	Strike F1	60 x 60	50g	11,000
OUTDOOR TOMATOES(OPV)	Oxly	60x 45	100g	14,000
	Cal J	60x 45	100g	14,000
CABBAGE (F1)	Pretoria	60x60	75gms	11,000
		60x45	100gms	14,000
	Fabiola	60x60	11000 seeds	11,000
	Bluejays	50x45	120g	17,000
CABBAGE (OPV)	Copenhagen	50x45	120g	17,000
	Glory of Enquizen	50x45	120g	17,000
BROCOLLI	Montop F1	60x45	14000 seeds	14,000
EGG PLANT	Long purple	60x60	100g	11,000
	Black beauty	60x60	100g	11,000
CUCUMBER (Outdoor)	Ashely	75x60	200g	8,800
ONION	Red pinoy	15x8	1.2 kg	300,000
	Red snack	15x10	1 kg	250,000
ONION (OPV)	Red creole	15x8	1.2 kg	300,000
	Bombay red	15x8	1.2 kg	300,000
	Texas early grano	15x8	1.2 kg	300,000
BUNCHING ONION	Evergreen	10x5	3 kg	750,000
LEEK	Italian giant	15x10	1.5kg	400,000
SQUASH (F1)	Raven	100x100	4000 seeds	4,000
SQUASH (OPV)	Green Zucchini	100x100	4000 seeds	4,000
WATERMELON (F1)	Asali	100x100	500g	4,000
	Sweet queen	100x100	500g	4,000
	Andaman	100x100	500g	4,000
WATERMELON (OPV)	Crimson sweet	100x100	500g	4,000
	Sugar baby	100x100	500g	4,000
CARROT	Monanta	15x drill	1.5 kg	1,500,000
	Nantes	15x drill	1.5 kg	1,500,000
	Kuroda	15x drill	1.5 kg	1,500,000
CORIANDER	Dhania	10x drill	2 kg	100,000
BEETROOT	Detroit dark red	25x10	3.5 kg	175,000
BUTTERNUT (F1)	Atlas	100x100	4000 seeds	4,000
BUTTERNUT (OPV)	Waltham	100x100	500g	4,000
OKRA	Pusa sawani	60x30	2 kg	22,000
	Clemson spineless	60x30	2 kg	22,000
KALE	Thousand headed	45x45	125g	19,700
COLLARD	Southern Georgia	45x45	125g	19,700
SPINACH	Fordhook Giant	45x45	1kg	19,700
LETTUCE	Bruma	30x25	200 gm	53,000
SWEET PEPPER (OUTDOOR)	Maxibel	45cmx45cm	140gms	19,700
	California wonder	45cmx45cm	100gms	19,000
	Yolo wonder	45cmx45cm	100gms	19,000

#### GREENHOUSE CROPS

Product	Variety	Spacing (cm)	Seed rate / 120 sqm	Plant population / 120 sqm
TOMATO (INDOOR)	Bravo	60cmx45cm	500	500
	Harmony	60cmx45cm	500	500
	Samantha	60cmx45cm	500	500
	Monalisa	60cmx45cm	500	500
	Mavuno	60cmx45cm	500	500
SWEET PEPPER (INDOOR)	Pasarela	60cmx45cm	500	500
	Ilanga	60cmx45cm	500	500
	Boogie	60cmx45cm	500	500
CUCUMBER	Mydas	45cmx45cm	500	500
	Bologna	45cmx45cm	500	500

#### EXPORT CROPS

Product	Variety	Spacing (cm)	Seed rate / acre	Plant population / acre
FRENCH BEANS		45cmx 9cm	100,000(1bag)	100,000
PEAS		45cmx 9cm	100,000(1bag)	100,000
B.CORN		75cmX20cm	26000(13KGS)	26,000
SCORN		75cmX20cm	17000(8kgs)	17,000

French Beans  
Runner Beans  
Snopeas  
Snapeas  
Baby Corn  
Rocket Chili

*Quality  
Seeds for  
Africa*

TEL: +254 20 2690693, 3562700 +254 725 549997 +254 734 257635  
EMAIL: info@khs.co.ke, WEBSITE: www.royalseed.biz,  
M-pesa paybill No.: 320350, Free SMS service: 22171











<b>Pumpkin</b>	85 seeds													
Arjuna F1														

<b>Sweet Corn</b>	500 g	1 kg	25kg											
Overland														

<b>Lucerne / Alfalfa</b>	500 g	1 kg	20 kg											
WL 625 HQ														

<b>Leek</b>	1 gram	2.5 grams	5 grams	10 grams	25 grams	50 grams	100 grams	250 grams	500 grams	1000 grams	100 seeds	500 seeds	1000 seeds
Italian Giant													

<b>Bunching Onions</b>	1 gram	2.5 grams	5 grams	10 grams	25 grams	50 grams	100 grams	250 grams	500 grams	1000 grams	100 seeds	500 seeds	1000 seeds
Green - Evergreen													

<b>HERBS</b>													
Basil Monica													



Save precious time with our handy 'Seed Shopping Lists'  
Just print, complete and fax to: + 254 202 403214




Or e-mail: info@khs.co.ke

Contact:  
Tel:  
Mob:

Business Name:  
Address:

E-mail:  
Website:

## SEEDS FOR EXPORT

 = pack size not available

Hot Peppers	1 gram	2.5 gram	5 grams	10 grams	25 grams	50 grams	100 grams	250 grams	500 grams	1000 grams	100 seeds	500 seeds	1000 seeds
Bandai F1													
Demon F1													
Demon Orange F1													
Daiya 619 F1													
Arenal F1													

Baby Corn	1 Kilo	25 Kilo	5000 Seeds	100,000 Seeds
PAC 321				
SG18				

French Beans	1 Kilo	25 Kilo	5000 Seeds	100,000 Seeds
Serengeti				
Boston				
Belcampo				
Lomami				
Goldplay				
Seagull				

Garden Peas	1 Kilo	25 Kilo	5000 Seeds	100,000 Seeds
Somerwood				
Green Feast				

Snow Peas	1 Kilo	25 Kilo	5000 Seeds	100,000 Seeds
Sweet Horizon				
Oregon Sugar Pod II				

Papaya	10 seeds	100 seeds	500 seeds	1000 seeds
Sinta F1				
Red Royale F1				
Vega F1				

Snap Peas	1 Kilo	25 Kilo	5000 Seeds	100,000 Seeds
Cascadia				



Save precious time with our handy 'Seed Shopping Lists'  
 Just print, complete and fax to: + 254 202 403214




Or e-mail: info @khs.co.ke

Contact:  
 Tel:  
 Mob:

Business Name:  
 Address:

E-mail:  
 Website:

 = pack size not available



## ASIAN VEGETABLES

Okra	10 grams	25 grams	50 grams	100 grams	250 grams	500 grams	1000 grams
Clemson Spineless							